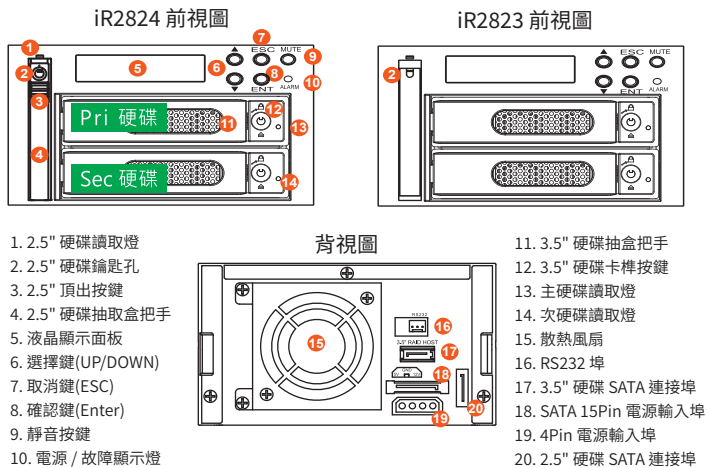


RAIDON

iR2823/iR2824 快速安裝導引

產品示意圖與配件表



打開包裝外盒後,包裝內容應包含下列組件:

iR2823 或 iR2824 產品本體X1(內含抽取盒x3)
SATA線 x2
快速安裝導引 x 1
螺絲及鑰匙

- 請先確認相關配件與產品本身是否有受損或是缺少配件,若有任何疑問,請與您的經銷商或業務人員聯絡。
- 請前往官網 (www.raidon.com.tw) 下載說明書、驅動程式以及其餘相關資源。

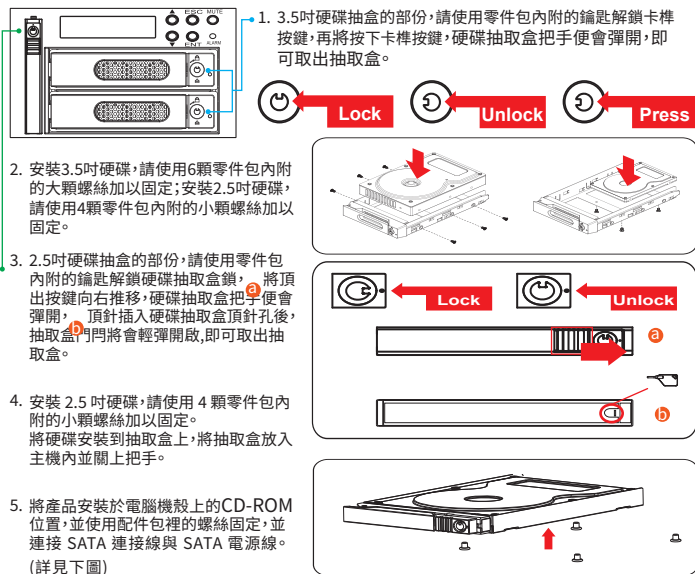


V1.0(DEC,2021)

1

硬碟安裝

請參照以下步驟完成硬體安裝:



內接主機殼示意圖



RS232 連接埠和 RS232 連接線: 提供工控產業或 IPC 產業透過 RS232 進行硬體狀態偵測。如有需要可向銳銜銷售/客服人員 supporting@raidon.com.tw 索取相關資料。

2

- 硬體安裝完成。一旦開啟電腦,您的作業系統會自動辨識所裝置好的硬碟。如果您的硬碟是必須被格式化的,請依照電腦的作業系統進行硬碟格式化步驟。當完成硬碟格式化後,硬碟便可以進行資料讀寫。

燈號說明

狀態	3.5" 硬碟讀取燈		2.5" 硬碟讀取燈	故障顯示燈	蜂鳴器
	主硬碟讀取燈	次硬碟讀取燈			
開機	藍燈恆亮	---	---	---	---
待機	藍燈恆亮	藍燈恆亮	---	---	---
硬碟故障 (RAID 降級)	紅燈恆亮	藍燈恆亮	紅燈恆亮	鳴叫	
資料存取	藍紫燈閃爍	藍燈閃爍	---	---	
資料重建 (Source)	藍燈恆亮	藍燈恆亮	---	---	
資料重建 (Target)	紅燈閃爍	藍燈恆亮	---	---	
風扇故障	藍燈恆亮	藍燈恆亮	紅燈恆亮	鳴叫	
溫度過高	藍燈恆亮	藍燈恆亮	紅燈恆亮	鳴叫	

LCD顯示的各種訊息

- 開機與正常待機狀態



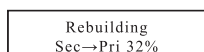
- 溫度過高 (≥50 °C)



- 硬碟損毀



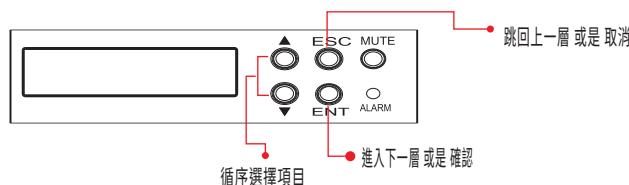
- 資料重建



當「T」出現時,是代表系統過熱的警告,但是不至於影響正常資料傳輸,只要改善環境溫度,就可恢復正常。

3

前面板操作



產品使用注意事項

- 電腦或伺服器具備 SATA I、SATA II 或 SATA III 介面。
- 具備 SATA I、SATA II 或 SATA III 介面的硬碟。
- 強烈建議使用 iR2823 或 iR2824 前先設定好 RAID 模式(預設值是 RAID 1)。
- 在新增或變更 RAID 模式後需重新啟動產品,以確保完成更新為新的 RAID 模式。
- 本系統允許使用不同廠牌的硬碟。但如果要獲得更好的效能,我們強烈建議使用相同廠牌型號的硬碟。
- 安裝硬碟前請先確認所使用的硬碟並無壞軌或是其他問題,以免導致系統損毀或資料遺失。
- 硬碟格式化後, iR2823 或 iR2824 的總使用儲存容量或許會與硬碟容量加總後的有所不同。
- 強烈建議除了使用 iR2823 或 iR2824 的資料儲存功能外,請針對重要資料備份到另一個儲存裝置上或遠端備份,雙重備援您重要的資料。若您儲存在 iR2823 或 iR2824 的資料損毀或遺失, RAIDON 將不負任何的責任。

感謝您使用 銳銜科技股份有限公司 的產品。

本手冊裡的資訊在出版前雖然已經被詳細確認,但實際產品規格將已出貨時為準;任何的產品規格或相關資訊更新,請您直接上 www.RAIDON.com.tw 網站查詢,或直接與您的業務聯絡窗口聯繫,本公司將不另行通知。

如果您對 銳銜科技 的產品有任何疑問,或是想獲得最新產品訊息、使用手冊或軟體,請您聯絡 supporting@raidon.com.tw,我們將儘速回覆您。

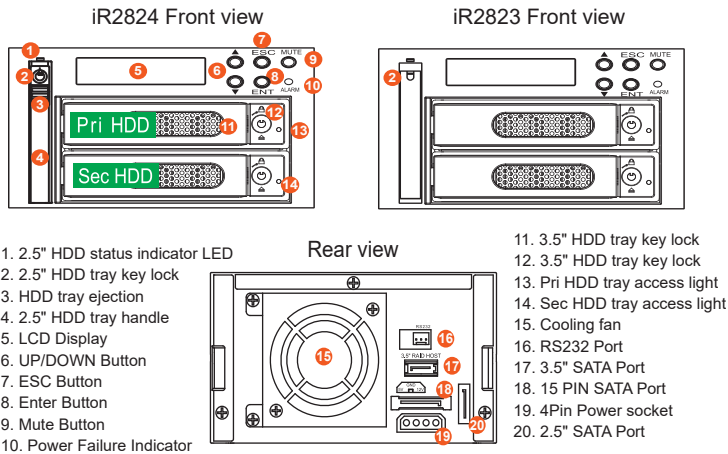
RAIDON 為 銳銜科技股份有限公司 旗下品牌之一
本說明相關產品內容歸 銳銜科技股份有限公司 版權所有

4

RAIDON

iR2823/iR2824 Quick Installation

Package Contents and Product Views



Open the package and you should find the following:

iR2823 or iR2824 X1 (with removable drive tray enclosed x 3)
SATA Cable x2
Quick Setup Guide x 1
Screws and keys

- Please check the product and accessories for any defect or missing parts. If you have any questions, please contact your product supplier.
- Please visit the official website (www.raidon.com.tw) to download user manuals, drivers and other related resources.



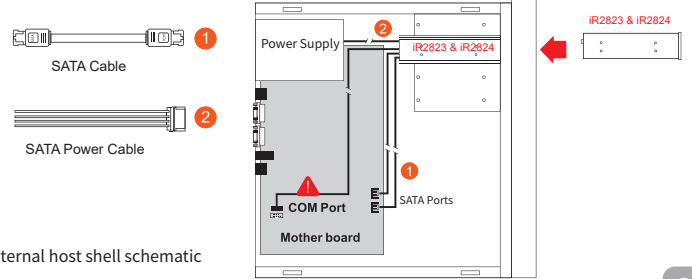
V1.0(DEC,2021)

1

Hardware Installation

Please follow the instructions below to complete the hardware installation.

- For the 3.5" HDD tray, please use the key included in the accessory kit to unlock the HDD tray key lock, and then press the HDD tray key lock. The removable drive tray will pop open and extract the removable drive tray.
- For 3.5" HDD/SSD, please secure it by use six the larger screws included in the accessory kit. For 2.5" HDD/SSD, please secure it by use four the smaller screws included in the accessory kit.
- For the 2.5" HDD tray, please use the key included in the accessory kit to unlock the 2.5" HDD tray key lock and push the HDD eject button to the right, the 2.5" HDD tray handle will pop up to remove the tray.
- Install the 2.5-inch hard disk and secure it with the small screws included in the 4 parts package.
- Install device into one of the CD-ROM bays with screws from the accessory kit. Then properly connect SATA cable and SATA power cable from your system to the device.



2

NOTE RS232 Port: For industrial control system or IPC to monitor the hardware status. More information, please contact your sales window or supporting@raidon.com.tw

- Power on your system after hardware installation is completed, and your operating system will automatically detect the hard drives from booting. Then follow the steps from your operating system to partition and format the drives when necessary, device will be ready to use once the format is completed.

LED Instruction

Status	3.5" HDD tray access light		2.5" HDD tray access light	Fail LED	Buzzer
	Pri HDD tray access light	Sec HDD tray access light			
Power On	Blue light always on		---	---	---
Stabdbly	Blue light always on		Blue light always on	---	---
HDD Failure	Red light always on		Blue light always on	Red light always on	On
Access	Blue and Purple light flashing		Blue light flashing	---	---
Rebuilding (Source)	Blue light always on		Blue light always on	---	---
Rebuilding (Target)	Red light flashing		Blue light always on	---	---
Fan Failure	Blue light always on		Blue light always on	Red light always on	On
Over Heat (≥50°C)	Blue light always on		Blue light always on	Red light always on	On

Hard Disk Status on LCD Screen

- Booting and Normal status



- Fan Failure



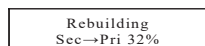
- Over Temperature (≥50°C)



- HDD Failure



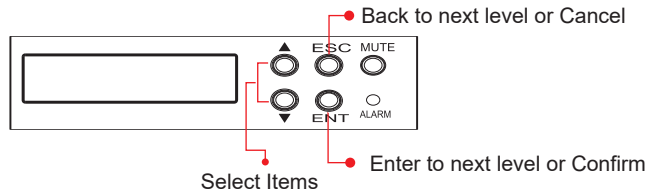
- Rebuilding



NOTE When "T" is shown, it's an alert of system over heating, but it would still work fine. And as long as the ambient temperature is improved, system shuts off the alert.

3

Description of Front Panel Operation



Hardware Requirements and Precautions

- Computers or servers with SATA I & SATA II & SATA III.
- Hard drive with SATA I & SATA II & SATA III.
- You are strongly advised to set the storage mode (the default is the Independent mode) before using the iR2823 or iR2824.
- The product needs to be restarted after adding or changing the RAID mode, and the update is guaranteed to be the new RAID mode.
- The product allows the user to simultaneously utilize two hard drives manufactured by different companies. However, if the user expects better efficiency, we strongly recommend the users to use hard drives manufactured by the same manufacturer.
- Please make sure that the two hard drives are free from bad blocks or defects prior to installation in order to avoid system crashes or data loss.
- The actual storage capacity of iR2823 or iR2824 recognized by the system may differ from the total capacity stated on the hard drives combined once the drives have been formatted.
- It is highly recommended for users to back up important data contained within the iR2823 or iR2824 on a regular basis or whenever the user feels necessary to a remote or a separate storage device. Stardom will not be responsible for any lost of data caused during the use of the unit or the recovery of the data lost.

Thank you for choosing RAIDON's product.

The information provided in this manual was checked before publication, but the actual product specifications may have changed before shipping; Latest product specifications and updates can be found at www.RAIDON.com.tw or through your sales representative. No separate notifications will be provided by our company.

If you have any questions about RAIDON products or would like to receive the latest product information, instruction manuals, or firmware, please contact supporting@raidon.com.tw for assistance.

RAIDON is one brand under RAIDON TECHNOLOGY, INC.

All product-related content in this manual are copyrighted by RAIDON TECHNOLOGY, INC.

4